

WESTERN  
**ART & Architecture**  
From Cowboy to Contemporary

**Christopher Blossom's Ship Comes In  
Painter Bill Anton's Sustaining Vision  
Living Outside: Laird Jackson Design House  
Perspective: Gennie DeWeese**



*plus:*  
**Wanderings: Seattle, Washington  
In the Studio with William Matthews  
No Looking Back: Veryl Goodnight**

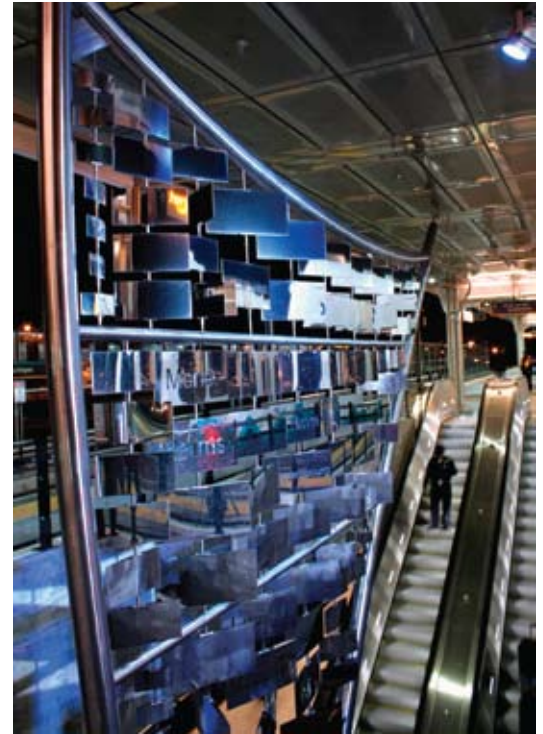
## WANDERINGS: SEATTLE, WASHINGTON

For art lovers, architecture buffs and foodies, merely getting into, out of and around the Emerald City is an entirely worthwhile pursuit

WRITTEN BY Stella Fong

My husband and I thrive on Seattle's "geeky" individualistic culture. The Emerald City's desire for its own identity invites creativity in its art, architecture and food, all of which make it an ideal spot to visit. Today the city continues to be the futuristic utopia symbolized by the iconic **Seattle Space Needle**. Built for the 1962 World's Fair, the tower portrays the spirit of the Jetsons as Seattle is programmed by the technology of Microsoft, Amazon.com and Boeing.

With Mount Rainier looming in the distance, our plane curves around the 605-foot spire, brushing by the **Columbia Center**, the tallest building in Washington, and over **Safeco Field** toward the Seattle Tacoma International Airport. The moist weather germinates art in unexpected locations. At baggage claim, Norman Andersen's mixed-media kinetic sculpture, *Rainmakers Baggage*, composed of vintage suitcases, rotates above the beltway. On a nearby wall, a reflective mural by Richard Elliott, featuring radiating geometric diamond forms, is aptly named *Eyes on the World*.



1 Werner Klotz, *Flying Sails*; stainless steel, 2009 | Location: SeaTac Airport Station | Photo: Werner Klotz





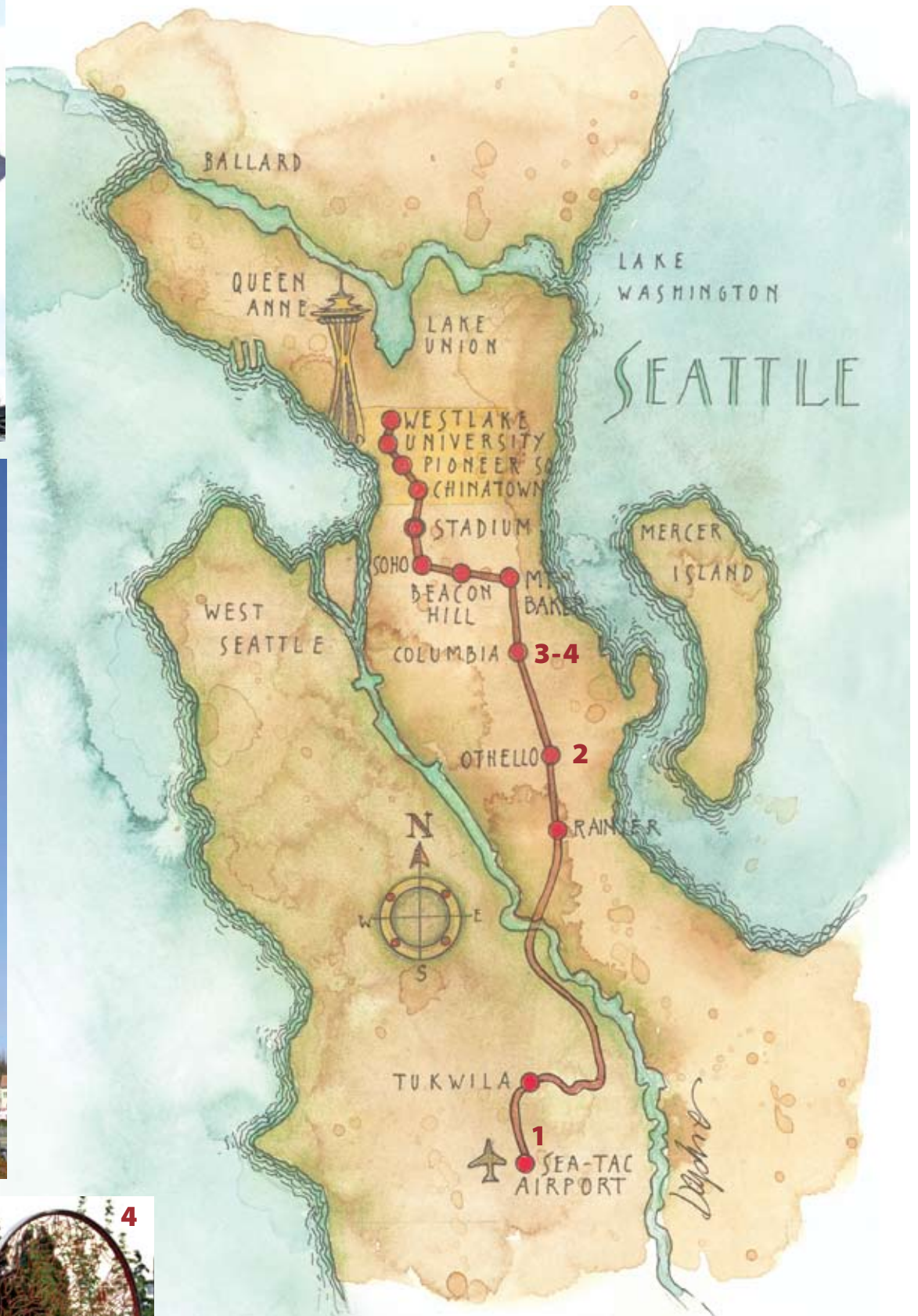
2



3



4



MAP: DAPHNE GILLAM

From top left: **2** Roger Shimomura, *Rainier Valley Haiku*; haiku by Kathleen Alcal, Suzanne Bottelli, Alan Lau and Colleen J. McElroy; fiberglass, concrete, etched stainless steel, 2008 | Location: Othello Station | Photo: Jennifer Babuca **3** Victoria Fuller, *Global Garden Shovel*; cast bronze, patina, paint, 2009 | Location: Columbia City Station | Photo: Jennifer Babuca **4** Gale McCall, *A Relic in the Garden*; bronze, stainless steel, programmed lighting, 2008 | Location: Columbia City Station | Photo: Jennifer Babuca | For more information on King County's remarkable public art program, visit [www.4culture.org/publicart](http://www.4culture.org/publicart)

*if*  
YOU GO...

**LODGING**

**Pan Pacific Hotel:**

2125 Terry Avenue; 206.264.8111;  
[www.panpacific.com/Seattle](http://www.panpacific.com/Seattle)

**The Westin Seattle:**

1900 5th Avenue; 206.728.1000;  
[www.starwoodhotels.com](http://www.starwoodhotels.com)

**ART**

**Fireworks Gallery:**

Seattle-Tacoma International Airport;  
206.244-5380; [www.fireworksgallery.net](http://www.fireworksgallery.net)

**Olympic Sculpture Park:**

2901 Western Avenue; 206.654.3100;  
[www.seattleartmuseum.org/visit/osp](http://www.seattleartmuseum.org/visit/osp)

**DINING**

**Claudio Corallo Chocolate:**

2122 Westlake Avenue; 206.859.3534;  
[www.claudiocorallochocolate.com](http://www.claudiocorallochocolate.com)

**Flying Fish:**

300 Westlake Avenue North; 206.728.8595;  
[www.flyingfishrestaurant.com](http://www.flyingfishrestaurant.com)

**Paddy Coyne's Irish Pub:**

1190 Thomas Street; 206.405.1548;  
[www.paddycoynes.net](http://www.paddycoynes.net)

**Seastar Restaurant and Raw Bar:**

2121 Terry Avenue, Suite 108; 206.462.4364;  
[www.seastarrestaurant.com](http://www.seastarrestaurant.com)

**Vino Volo:**

Seattle-Tacoma International Airport,  
Central Terminal Marketplace; 206.246.4801

**SHOPPING**

**Beecher's Handmade Cheese:**

1600 Pike Place; 206.956.1964;  
[www.beechershandmadecheese.com](http://www.beechershandmadecheese.com)

**Designtheory:**

2132 Westlake Avenue; 206.682.2975;  
[www.thedesigntheory.com](http://www.thedesigntheory.com)

**Filson:**

1555 4th Avenue South; 206.622.3147;  
[www.filson.com](http://www.filson.com)

**Nordstrom:**

500 Pine Street; 206.628.2111;  
[www.nordstrom.com](http://www.nordstrom.com)

**Sur La Table:**

84 Pine Street; 206.448.2244;  
[www.surlatable.com](http://www.surlatable.com)



1



2



3



4



5

**Photos this page and opposite:** 1 Christine Keff's Flying Fish restaurant offers sensational seasonal food. Photo: Mark Baushke | 2 Kitchen items your fetish? Sur La Table is located right in Pike Place Market. Photo: courtesy Sur La Table | 3 Beecher's Handmade Cheese — bet you can't eat just one bite. | 4 Fireworks Gallery in the Seattle-Tacoma International Airport is the best for art and gifts. | 5 Sushi Row is an experience you don't want to miss at the Sea Star restaurant. Photo: Ryan Dunn | 6 Try a porter at Paddy Coyne's Irish Pub. Photo: Ryan Dunn



From the airport, the new **Link Light Rail** transports us downtown for \$2.50. Sound Transit allocates a portion of project construction costs to art, working with local communities to select artwork to integrate into the system. One of the larger acquisitions is a pair of 30-foot stainless-steel abstract sails constructed by Werner Klotz, hanging like wings from the ceiling of the mezzanine level at the SeaTac Airport Station. The wind-activated panels contain the laser inscribed names of Northwest Native tribes. As we step onto the escalator, the rhythmic sounds of Native American drummers pace our ascent.

Steely “ding dongs” signal the closing of the doors, beginning our E Ticket ride. We whiz by a garden with the white statues of Guanyin, the Buddhist symbol of mercy and compassion; a community garden dormant from summer harvest; a group of women wearing hijab headscarves; and a lone woman in a saffron-colored sari.

Eight lyrical African ladies of cut steel dance in the landscape, greet us as we approach the Othello Station. Roger Shimomura’s sculpture of stacked found items, including a shoe and a bowl with chopsticks, named *Rainier Valley Haiku*, offers an interpre-

# CLAIR KEHRBERG

*Fine Leather Art*

*Embracing the American West with contemporary handcrafted leather designs*



541.620.1634  
**ClairSaddleShop.com**  
 info@clairsaddleshop.com  
 facebook: Clair Kehrberg  
 John Day, Oregon



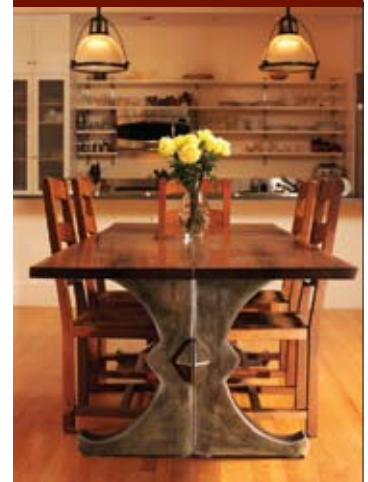
**BrandnerDesign.com**

USING RECLAIMED AND RECYCLED MATERIALS, A BRANDNER PIECE IS FUNCTIONAL AND ADDS DISTINCTION LIKE ONLY FINE ART CAN.

EMAIL US AT  
 INFO@BRANDNERDESIGN.COM  
 OR CALL 406-223-6860  
 FOR MORE INFORMATION.

EAST COAST • CALIFON, NJ  
 WEST COAST • BOZEMAN, MT

RENAISSANCE X TABLE



# Seattle's ENCLAVES

With very distinctive vibes, Seattle's Queen Anne and Fremont neighborhoods add to the city's unending charm ...



## QUEEN ANNE

Just above downtown Seattle, Queen Anne glitters under the Space Needle's watchful

eye. Here you can escape the techno dominance, step back in time and unfold board games in Blue Highway Games while hoarding stationary for card writing at Stuhlbergs. Then, at Ethan Stowell's intimate eatery, How to Cook a Wolf, the simple and rustic spirit of MFK Fisher is found in every bite of Polenta Gnocchi and Pork Belly.

### Blue Highway Games

2203 Queen Anne Ave N; 206.282.0540;  
[www.bluehighwaygames.com](http://www.bluehighwaygames.com)

### Stuhlbergs

1801 Queen Anne Ave N; 206.352.2351;  
[www.stuhlbergs.com](http://www.stuhlbergs.com)

### How to Cook a Wolf

2208 Queen Anne Ave N; 206.838.8090;  
[www.ethanstowellrestaurants.com/howtocookawolf](http://www.ethanstowellrestaurants.com/howtocookawolf)



Fireworks Gallery, Seattle-Tacoma International Airport

## FREMONT

Fremont, a neighborhood that bills itself as the "center of the known universe," rotates on its own axis. The eclectic theme is evident in the community's public art, from the cast bronze statue of Vladimir Lenin to the Fremont Troll, a sculpture living under the Aurora Bridge. Come here any day to pick up a book on sailing at the SeaOcean Book Berth or some rustic French couture at Lola Pop. But Sunday may be the best day to be here. By day secure a tie-dyed T-shirt and a loaf of artisan bread, cheese and in-season fruit at the Fremont Sunday Market; then by night wear the shirt and bring the food to the Fremont "Almost Free" Outdoor Cinema. If you are still hungry after tasting all the free samples and visiting the Ebelskiver Lady and Los Agaves Tamales at the market, wander over to Anita's Crepes for a Nutella and banana crepe.

### SeaOcean Book Berth

3534 Stone Way N; 206.675.9020;  
[www.seaoceanbooks.com](http://www.seaoceanbooks.com)

### Lola Pop

711 N 35th Street #B; 206.547.2071;  
[www.lolapopseattle.com](http://www.lolapopseattle.com)

### Fremont Sunday Street Market

N 34th and Phinney Avenue N; 206.851.5100,  
[www.seattlemarkets.org](http://www.seattlemarkets.org)

### Anita's Crepes

4350 Leary Way NW; 206.838.9997;  
[www.anitascrepes.com](http://www.anitascrepes.com)



**Above:** Wander through nine waterfront acres at the Seattle Art Museum Olympic Sculpture Park. Photo: Benjamin Benschneider

tation of what it means for a person of Japanese descent to live in America. Stonework by Brian Goldbloom, *Stormwater Project*, is functionally integrated as eight granite catch-water basins.

Richard Elliott's reflectors shine brightly as we glide by a retaining wall holding 35 panels of his work, running two blocks along Martin Luther King Way. At Columbia City Station, we see a 36-foot-tall bronze sculpture, *Global Garden Shovel*, cast with hand-carved plants, fruits and vegetables, and then two bronze magnifying-glass sculptures created by Gale McCall, named *A Relic in the Garden*.

At the Mount Baker Station, Guy Kemper's *Rain, Steam, Speed and Seattle Sunrise* painted glass offers a sunny splash of color. As we curve into **SODO** or South of Downtown, through the industrial district, we spy our first glimpse of the city, with Safeco and Quest Fields sporting arched crowns and the torchlike Seattle Space Needle guarding the background. A glance to the other side of the train reveals one of Seattle's most recognizable landmarks, the **Old Rainier Brewery** building with its mustard, moss and brick-orange walls, now housing commercial and creative spaces.

Graffiti colors every wall on both sides of the train for several miles. Just before arriving at the Stadium Station, the **Filson** factory appears. This Seattle haberdashery has been in existence for more than 100 years, and seems in odd juxtaposition to the modern edifices of the Seahawks and Mariners sports franchises.

Our ride ends at Westlake Station. We ascend to the street, walking past Seattle's flagship department store, **Nordstroms**, to board the **South Lake Union Trolley**, known locally as the "SLUT," and head north to the Westlake and Denny Station. When the doors slide open, *Three Women*, created by Akio Takamori, a collection of larger-than-life cast-aluminum sculptures depicting a girl, a young woman and another with her baby, welcomes us to the **Whole Foods Market** and **Pan Pacific Hotel** complex. The hotel touts itself as a "luxury urban oasis" showcasing sleek modernity designed by hospitality consultant Hirsch Bedner.

After unpacking, we head to **Seastar Restaurant and Raw Bar** for the "45-Minute Lunch," for \$14. A Spicy Ahi Roll fuels our walk down **Westlake Avenue**. We stop at **Designtheory** to find vintage, one-of-a-kind "bling" design and wander into **Claudio Corallo** to taste 100-percent pure chocolate made from African cacao.

We round the two cylindrical towers, nicknamed "the corn cobs," of the **Westin Hotel**. As we approach **Pike Place Market**, we pass the original **Sur La Table** kitchen equipment store, and at the corner, look through the win-

dows of **Beecher's Homemade Cheese**. Across the street at **Victor Steinbrueck Park**, we find James Bender's totem pole watching over Elliott Bay. The Bell Street Pedestrian Bridge takes us to the water's edge. Finally arriving at the **Olympic Sculpture Park**, our day's destination, we follow the paths that lead to more than 20 outdoor sculptures. Wandering through nine waterfront acres, we view works created by artists including Alexander Calder, known for his red steel *Eagle* and Claes Oldenburg for *Typewriter Eraser, Scale X*.

Back in **South Lake Union**, we venture over to Christine Keff's **Flying Fish Restaurant**, designed by Phillip Christofides, for seasonal seafood, and then chug a porter at **Paddy Coyne's Irish Pub**.

At the airport, our Seattle experience concludes by securing an art piece at **Fireworks Gallery** and sipping Pacific Northwest wine at **Vino Volo**, located at the edge of the Central Terminal atrium where Ralph Helmick's and Stuart Schechter's *Landing*, a mixed-media sculpture, floats above the glass atrium looking onto the tarmac. We plan to return to the Emerald City soon by plane, explore by train and walk everywhere. ■

## CHARLES TIMOTHY PRUTZER



PO Box 49431, Colorado Springs, CO 80949 | 719-388-3324

*Escondite*, 22x40 inches, Oil on Canvas